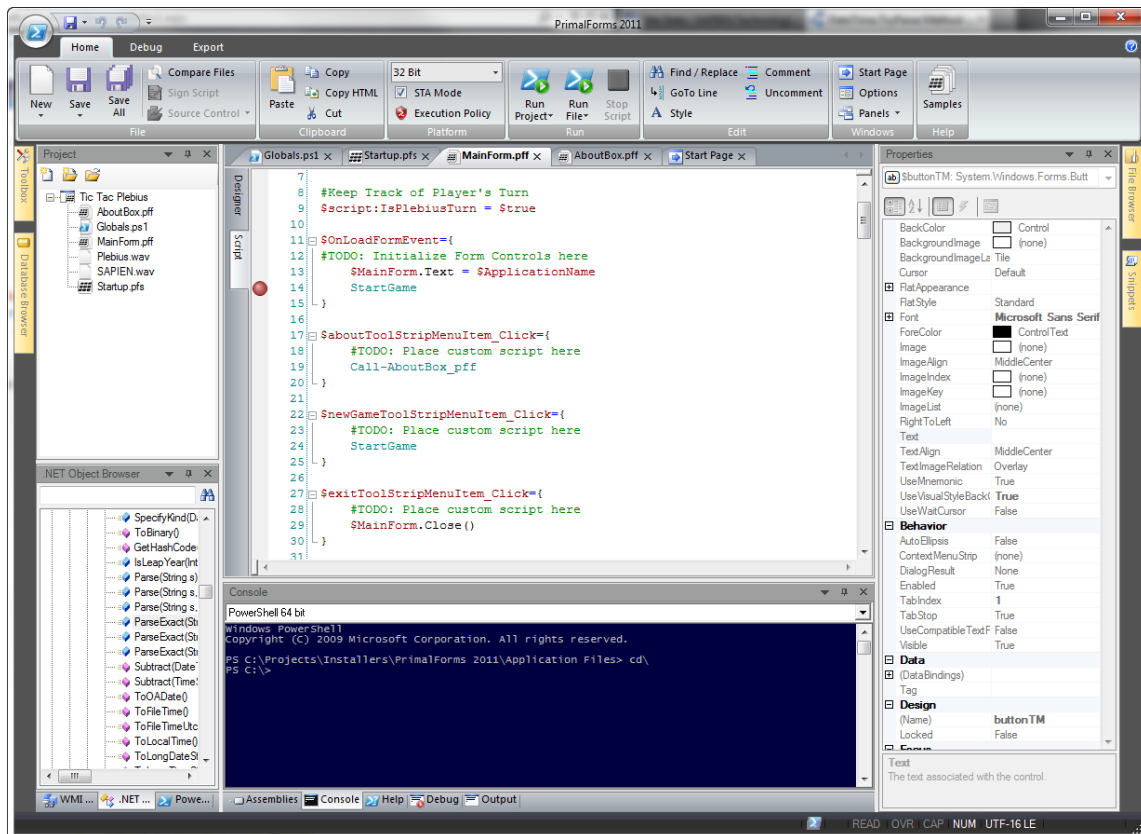


PrimalForms™

a visual PowerShell IDE

2011



PowerShell... like you have never experienced it before. Visual, easy, and still incredibly powerful. Have it all with PrimalForms 2011: The next generation PowerShell development environment. Need a powerful PowerShell scripting environment? PrimalForms gives you that for command line and GUI based scripts along with a 32-bit and 64-bit debugger.

So you work primarily in the console? How about 32-bit and 64-bit consoles that you can switch between with one click without restarting or losing your context? Add to that the ability to drag and drop lines from the console into the script pane and vice-versa and you have unmatched scripting/console integration.

Want to create visual PowerShell based apps and distribute them to your users? No other tool gives you such easy and powerful drag and drop PowerShell forms creation, one step access to WMI and SQL integration, and clean and simple script packaging and distribution.

PrimalForms. The ultimate tool for all PowerShell users.

PowerShell Script Editor

Features a robust editor with syntax coloring, bracket matching, collapsible code, and bookmarking. The script editor is not just limited to forms but it can also open and edit any PowerShell script you need.

Form Designer

The Enhanced Form Designer makes GUI design fast and easy. Eliminate the need to manually write hundreds of lines of code.

Multiplatform Support

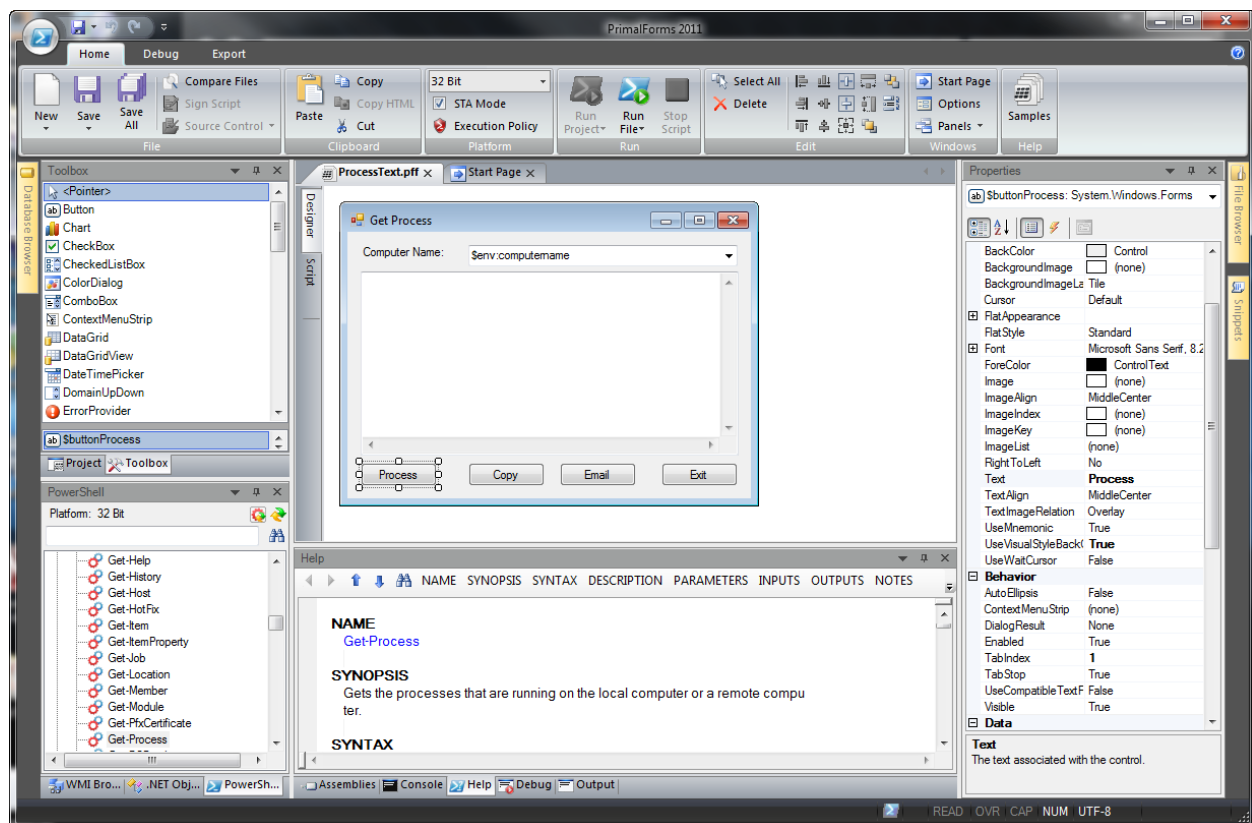
Provides support for 32 bit and 64 bit versions of PowerShell within a single application. In addition, it provides the ability to run scripts with elevated privileges and in STA mode.

Create Executables

Convert your script into executables. Fine tune custom access privileges, elevation and platforms. Run 32 and 64 bit executable files as long as Microsoft PowerShell is installed.

Script Debugger

Run and debug your PowerShell scripts directly from within PrimalForms. A multitude of helpful tools allow you to quickly debug, solve and verify any problems you may encounter.



Top Ten Reasons to Buy

Develop visual tools for non-PowerShell users

One of the top reasons to create a Graphical User Interface (GUI) for PowerShell is to distribute the script to a non-PowerShell user. The average user prefers a mouse click over having to type a command. Allow users unfamiliar with PowerShell to utilize its capabilities without requiring them to learn or use the console.

Deploy solutions

Utilize the capabilities of PowerShell to provide task oriented solutions to end users. Deploy your scripts to other users and administrators using SAPIEN's Advanced Script Packager. No longer require your users to open a command prompt. With the Advance Script Packager you can distribute royalty free solutions to all your end users.

Solution security

In addition to creating packaged executable, the Advanced Script Packager provides protection for script tampering. In addition, the Packager supports elevation as well as the ability to specify alternate credentials for limited users.

Save time designing Graphical User Interfaces

Our integrated GUI Designer will save you time and money by automatically generating hundreds of lines of code without having to type a single line. In addition, PrimalForms 2011 can automatically generate PowerShell GUIs and scripts for Databases and WMI Queries.

Comprehensive Help System

The included SAPIEN Document Explorer contains hundreds of samples, original documentation and links directly with online resources. In addition, PowerShell's robust help

system is integrated directly into PrimalForms 2011.

Script development and interactive work

Develop scripts and execute them in a fresh engine each time to reduce initialization errors. In addition, users have the option to run scripts directly in the shell and interact with the results.

Platform independent debugging

Debug your PowerShell code in 32 or 64 bit mode all from within one single integrated environment.

Unsurpassed support

Our product support delivers unsurpassed response times. You don't have to believe us, just go and ask our users in our support forum. Our community site ScriptingAnswers.com is frequented by some of the best scripting gurus in the industry. So whether you look for product support or help with a scripting problem, we are here for you.

Spend less time typing code

PrimalSense is helping you with code completion, supporting built-in PowerShell commands, Modules, Snapins and .NET objects. Code snippets provide standard constructs and can easily be customized or expanded for your applications. Hundreds of expert written code samples enable you to create turnkey solutions for your enterprise.

Never lose a script again

Integrated Source Control support helps provide a backup mechanism by storing versions of any script file. Source Control can be an invaluable tool, especially in team environments.

Feature	PrimalForms CE	PrimalForms 2009	PrimalForms 2011
Forms Designer	●	●	●
Forms Designer Enhancements		Sync form control names with editor	Sync form control names with editor, Auto rename controls and events, Add multiple events at once, Export form with new runspace and more
Export Form Code	●	●	●
Slimmer Form Code Generation			●
Preserve and Edit Form Events		●	●
Automatic Syntax Checking			●
Copy / Paste Form Controls		●	●
Supported Form Controls	37	41	49
MSChart Controls (Installed Separately)			●
Control Helper Functions			●
Form Templates			●
Embedded Form Images			●
Integrated Script Editor		●	●
Edit PowerShell files		ps1	ps1, psd1, psm1
PrimalSense		●	●
Copy Text To HTML			●
Advanced Script to Exe Packager (32 & 64 Bit)		●	●
Integrated PowerShell Help		●	●
Link to Online Help			●
32 bit Snapin & Module Support		●	●
64 bit Snapin & Module Support*			●
Run and Execute Scripts		●	●
Multiform Support			●
32 bit and 64 Bit* Debugger			●
Elevated Script Execution / Debugging			●
Snippet Support			●
Integrated PowerShell Console			●
.NET Object, Database, File and WMI Browsers		.NET Object Browser Only	●
Auto Generate Database & WMI Forms			●
Create Script Modules			●
Source Code Support			●
Compare and Merge Files and Folders			●

* Requires a 64Bit OS



SAPIEN Technologies, Inc.
841 Latour Ct. Ste. D
Napa, CA 94558
707-252-8700
www.sapien.com